

**PARADIP PORT TRUST
MEDICAL DEPARTMENT**

No.CMO/OE/A/GL-162/2015(Pt-I)/219

Date:27/01/2020

CIRCULAR

An outbreak of respiratory illness caused by a novel (new) coronavirus (termed “2019-nCoV”) that was first detected in Wuhan City, Hubei Province, China, continues to expand. Cluster of Pneumonia were being reported from Wuhan City, Hubei Province in China, including outside of Hubei Province. Airports and seaports are the main entry points of the virus through the infected passengers and crews..

Corona viruses are a large family of viruses, some causing illness in people and others that circulate among animals, including camels, cats and bats. Rarely, animal coronaviruses can evolve and infect people and then spread between people. However, the human to human transmission is variable with some easily transmitting and some do not transmit readily between people. Some of those can cause less severe disease such as common cold and others more severe diseases such as MERS (Meddle-East Respiratory Syndrome) and SARS (Severe Acute Respiratory Syndrome).

The others cases outside of China were reported in France, Australia, Thailand, Japan, South Korea, the US, Vietnam, Singapore, Nepal, Hong Kong, Macao and Taiwan. So far, no case of nCoV has been reported from India.

When person-to-person spread has occurred with MERS and SARS, it is thought to have happened via respiratory droplets produced when an infected person coughs or sneezes, similar to how influenza and other respiratory pathogens spread. Spread of MERS and SARS between people has generally occurred between close contacts.

Early on, many of the patients in the outbreak in Wuhan, China reportedly had some link to a large seafood and animal market, suggesting animal-to-person spread. However, a growing number of patients reportedly have not had exposure to animal markets, suggesting person-to-person spread is occurring. At this time, it's unclear how easily or sustainably this virus is spreading between people.

The Severe Respiratory Infection by 2019-nCoV, neither has any specific treatment nor any vaccine to prevent the disease.

Hence, the strategy to prevent the spread of disease rests on early detection of suspected cases and isolation for observation along with identification of the virus, if any.

The general measures to prevent the spread of the infection are mentioned below as per WHO guidelines;

1. Clean Hands with soap & water or alcohol bases hand rub frequently
2. Cover nose and mouth while coughing and sneezing with flexed elbow or tissue paper
3. Avoid close contact with anyone with cold or flu-like symptoms
4. Thoroughly cook meat and eggs
5. Avoid contact with live wild or farm animals

Therefore, all stakeholders are hereby informed to focus more on the passengers/crews of vessels reaching Paradip within 28 days of the last port of call being any Chinese Port, Ports of Southeast Asian Countries or Port of any affected country. It is urged to get specific information on any person(s) suffering from Common-Cold-like symptoms on Board as per format (attached) and pass to the Harbour Master/DC/CMO, so that further necessary action can be taken as per the SOP (attached) on 2019-nCoV-China infection. Daily surveillance report will be submitted to the district level as well as the state level.

Sd/-

**Chief Medical Officer
Paradip Port Trust**

CC to:

1. The Principal Secretary, H&FW Department, Govt. of Odisha
2. All HoDs (Except CMO)/Commandant CISF with a copy of the letter no. 26 dated 24.01.2020 of the Director, Public Health, Odisha./Dr Badal Kumar Singh, MO/Sri Dillip Kumar Nayak, Head Pharmacist
3. P. Bali, Director C.O. MoS, Delhi
4. Custom Department/Coast Guard/Immigration Department, Paradip.
5. Stevedores/Agents/Steamer Agents with a request to provide information on suspected 2019-nCoV-China affected person on board, as per format to the Harbour Master & CMO at the time of request for pratique of all vessels including ‘Nil’ report mandatorily.
6. Port Health Officer/Sr Regional Director, GOI, Bhubaneswar for expediting functioning of PHO at Paradip and necessary w.r.t 2019-nCoV
7. CDMO, Jagatsinghpur/ADMO (PH) Jagatsinghpur
8. Director, Public Health, Odisha
9. Sr PS to the Chairman, PPT for kind information of the Chairman, PPT
10. Superintendent, SCB Medical College & Hospital, Cuttack
11. Principal, SCB Medical College & Hospital, Cuttack
12. HoD, Medicine, SCB Medical College & Hospital, Cuttack

Standard Operating Procedure to tackle 2019-nCoV-China Infection/Spread at Paradip Port Trust

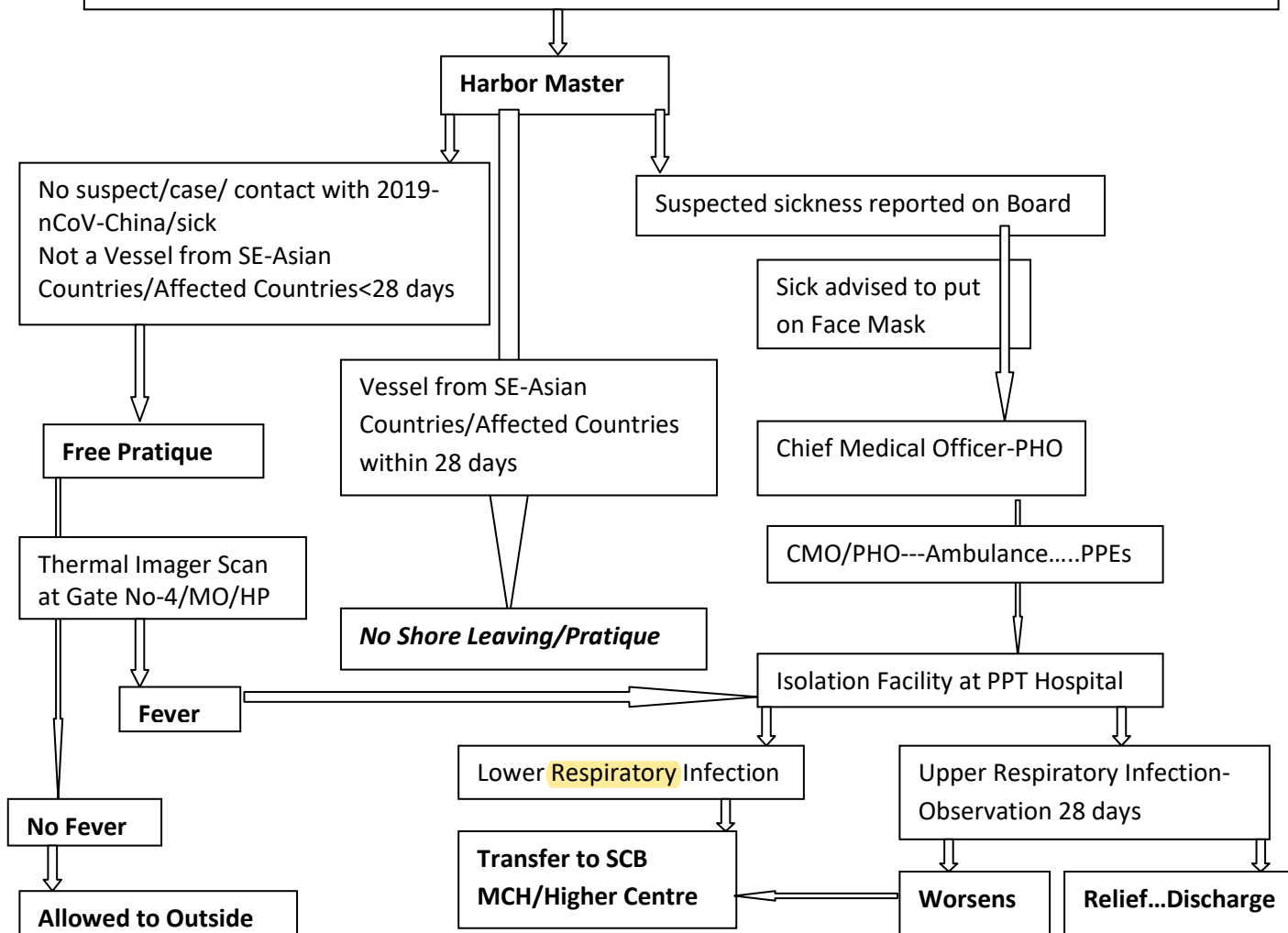
On arrival at the Paradip Sea, every Captain of the Vessels will be advised by the HM to impress upon his crews/passengers as follows;

You will also receive daily calls/visit from PPT to ask your health status for the day, kindly cooperate with them.

You are requested to self-monitor for development of symptoms suggestive of nCoV i.e. Fever and Cough within 28 days, from the date of departure from nCoV affected countries.

In case of getting symptoms (fever and cough), put on a face mask immediately, restrict your outdoor movement and contact your Steamer Agent/HM/DC/CMO of Paradip Port, during stay at the Paradip Port; and /or contact **24 hours helpline number 011-23978046**.

Captain of foreign vessels touching Ports of countries affected by 2019-nCoV-China informs HM, PPT through email about crew(s)/passenger(s) suspected of Cononavirus Infection with details as per format provided, including a 'NIL' Report, while requesting for pratique



Reporting format on sickness due to suspected 2019-nCoV-China

Filled by.....

Signature of the Captain of the Vessel with seal

Name of the Vessel.....Name of Agent.....	
Full Name of Crew/Passenger :	
Age in years:	
Gender:	
Passport number:	
Nationality :	
Name of the Agent	
Complete Address (For Indian passport holders)	
Place of Stay during visit to India (For International tourists)	
Landline number with STD code (In India) of the Agent	
Mobile number (In India) of the Agent	
Countries visited in last 14 days	
Date of arrival from 2019-nCoV affected country to India	
Date of Initial Symptoms after leaving affected country	
Passenger History: Clinical Details Fever: Yes/No Cough: Yes/No Respiratory Distress: Yes/No	
In case of any symptoms the passenger should be immediately isolated with face mask...Inform HM/CMO-cum-PHO	