

Introducing AstaaraCyber





#ResilienceandRecovery

KEY CONTACTS

Robert Dorey

Chief Executive
Officer

James Cooper

Group Managing
Director

William Egerton

Chief Cyber
Officer

Tom Graham

Ports
Underwriter

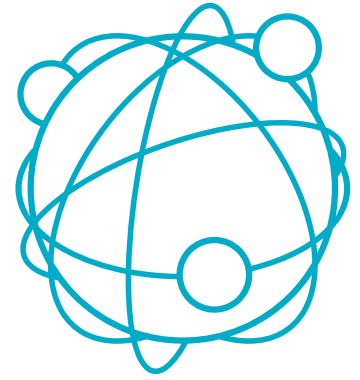
Nick Welsh

Senior Cyber
Consultant

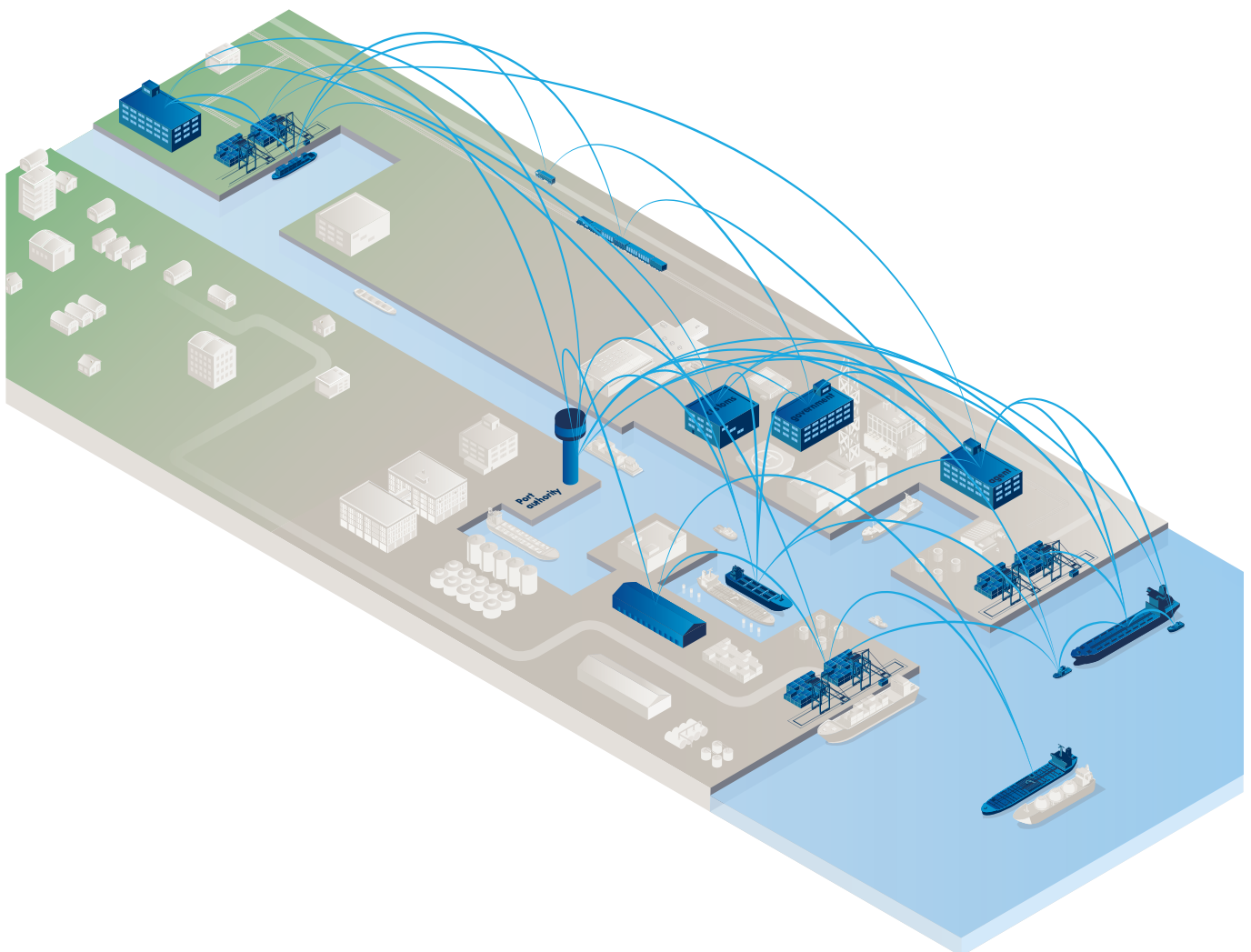


CONTENTS

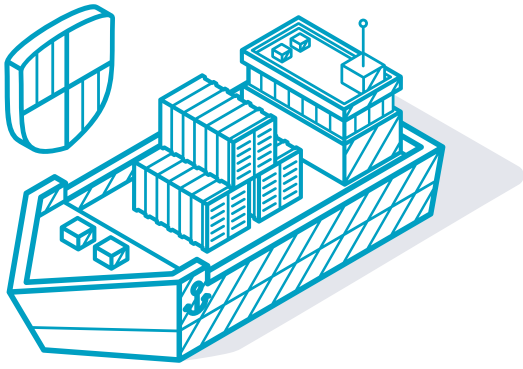
1	The interconnected maritime world	4	8	An introduction to Astaara	11
2	A sample of some publicly known marine industry cyber attacks	5	9	Astaara offers maritime companies an integrated approach to tackling the cyber threat	12
3	Key relationships need to be proactively managed in the event of a cyber incident	6	10	How do we deliver strategic outcomes to shipowners	13
4	Glossary of terms used	7	11	Next steps... from understanding you as a client to improving your cyber security posture	14
5	What is cyber?	8			
6	This cyber risk can be managed...	9			
7	The regulatory picture = why you cannot ignore responding to cyber	10			



1 THE INTERCONNECTED MARITIME WORLD



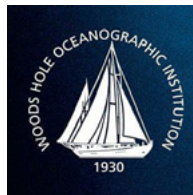
Taken from:
MOVE FORWARD: STEP BY STEP TOWARDS A DIGITAL PORT.
A White Paper issued by Port of Rotterdam and the British Ports Association



2 A SAMPLE OF SOME PUBLICLY KNOWN MARINE INDUSTRY CYBER ATTACKS

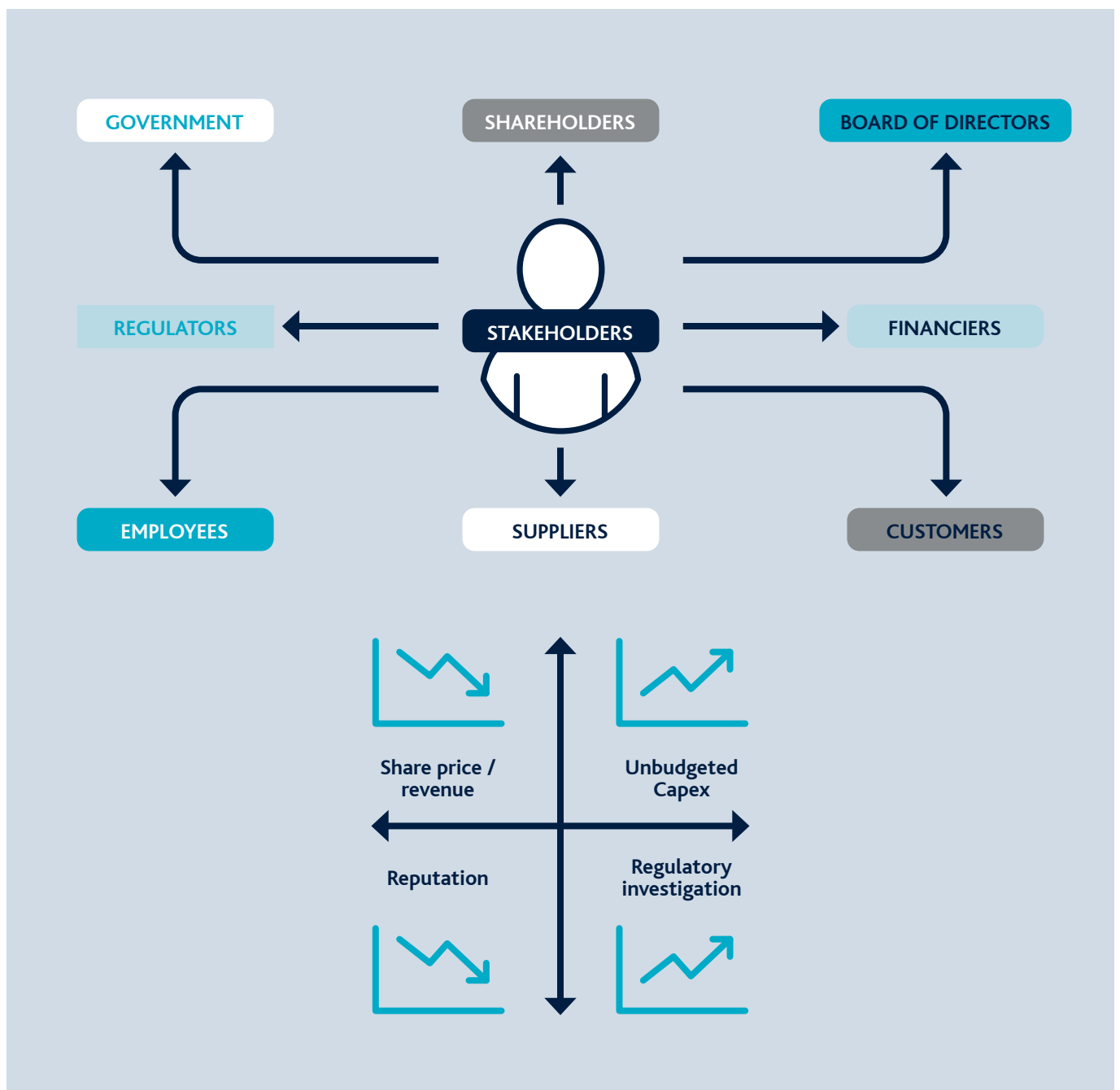
One common factor

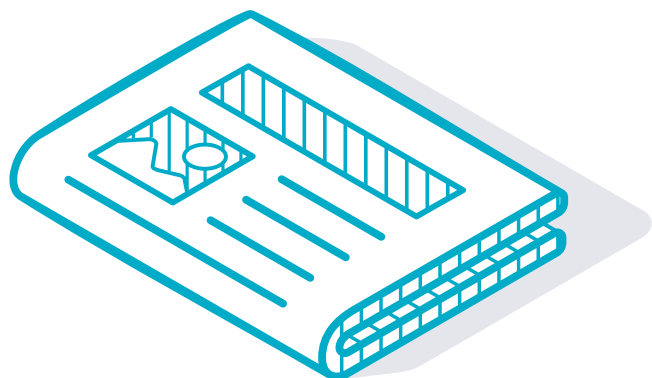
- All have materially increased their response to the cyber threat
- Many other companies who have been hit have announced a response to the cyber threat
- It is not a case of if, but when





3 KEY RELATIONSHIPS NEED TO BE PROACTIVELY MANAGED IN THE EVENT OF A CYBER INCIDENT





4 GLOSSARY OF TERMS USED

NISD

Network & Information Systems Directive – The EU Directive related to cyber security and marine. Establishes the idea of an Operator of Essential Services (OES)

NISR

Network & Information Systems Regulations 2018– The UK implementation of NISD

CAF

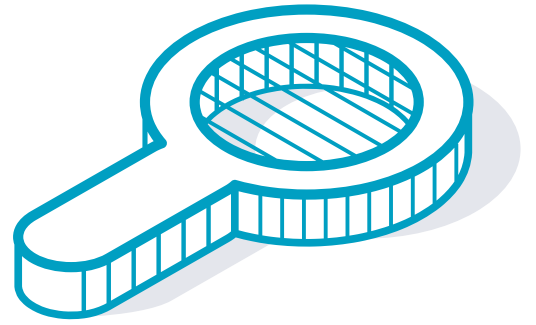
Cyber Assessment Framework – The UK Department for Transport model for assessing an OES against NISR

NIST

National Institute of Standards and Technology Cyber Security Framework – The US regulatory approach to cyber security

DPA 2018/GDPR

General Data Protection Requirements – the EU data protection legislation



5 WHAT IS CYBER?

Definition

Unauthorised acts or activities occurring to/on your data, systems and networks

Who does it affect?

All data and all systems across the whole business

it is the Head Office and your remote offices, including ships

Why does it happen?

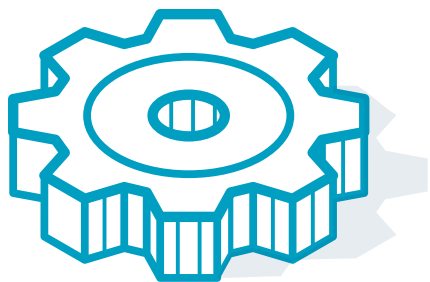
Drivers are varied – money, political advantage, kudos

Future Developments

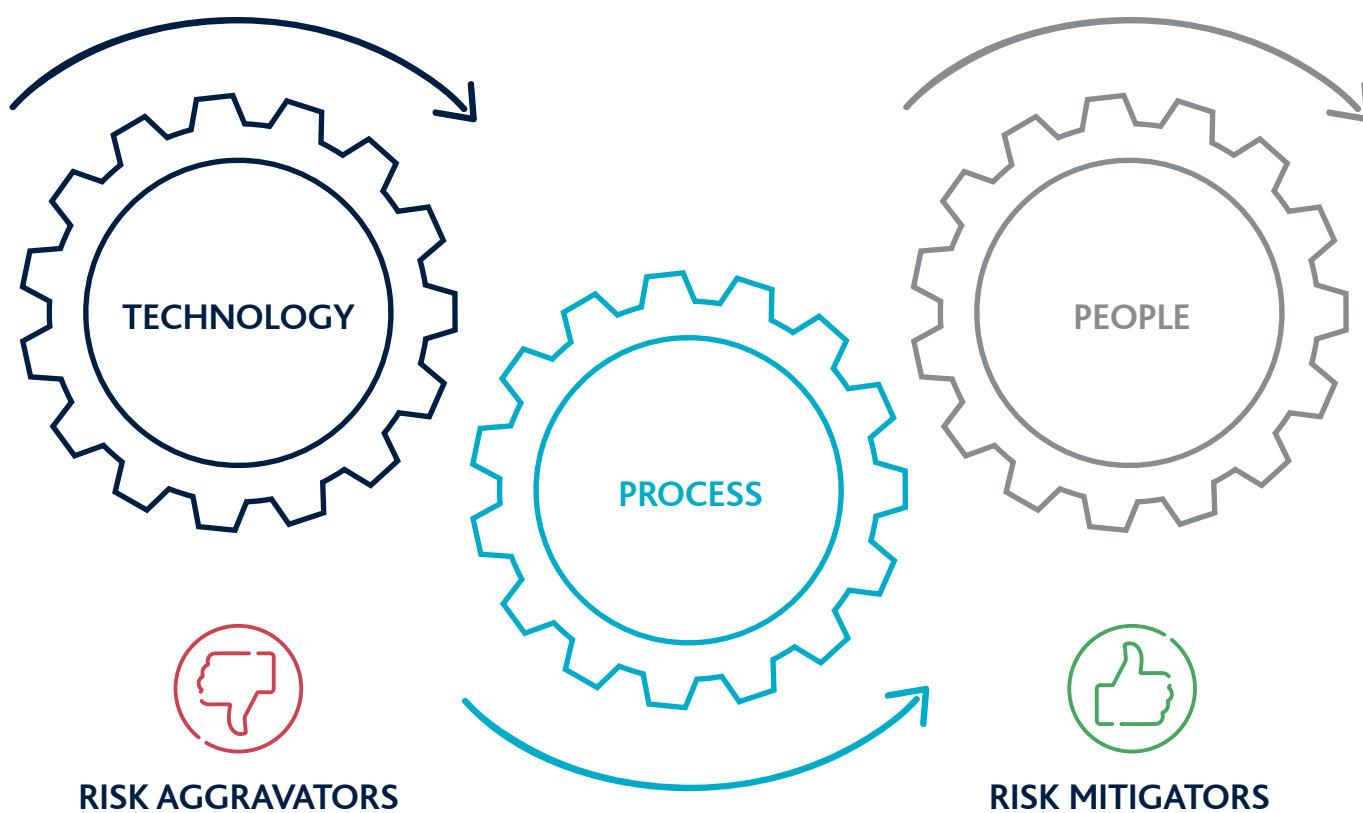
Attacks continue to increase in scale, complexity and sophistication. Cyber regulation increases

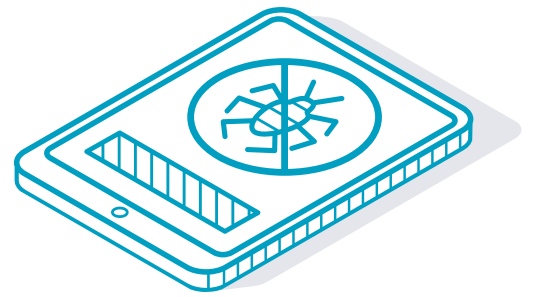
Estimated Cost

2019 global cost of cyber crime est. \$2tn pa, however the global cyber security budget est. \$150bn pa



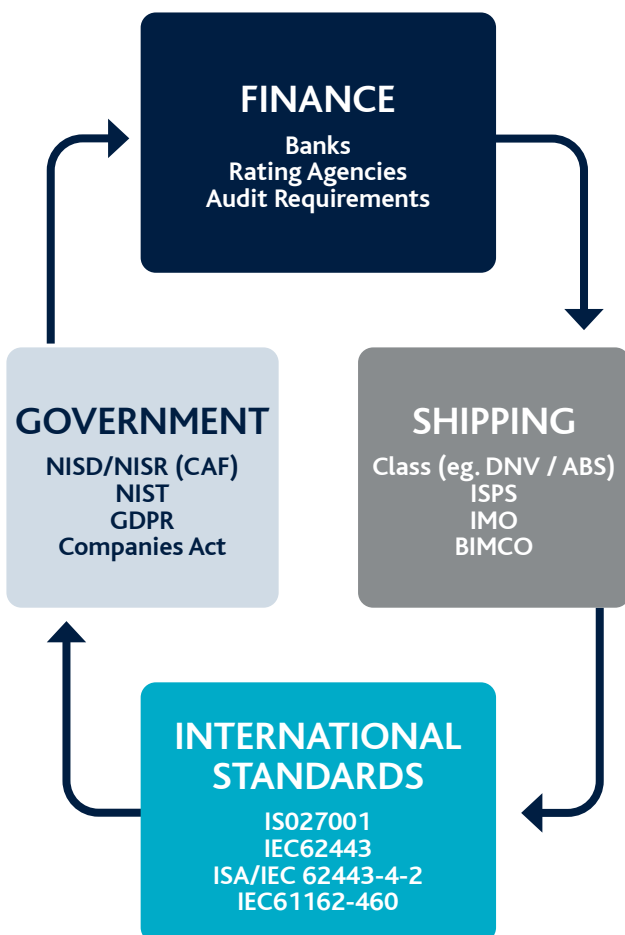
6 THIS CYBER RISK CAN BE MANAGED...



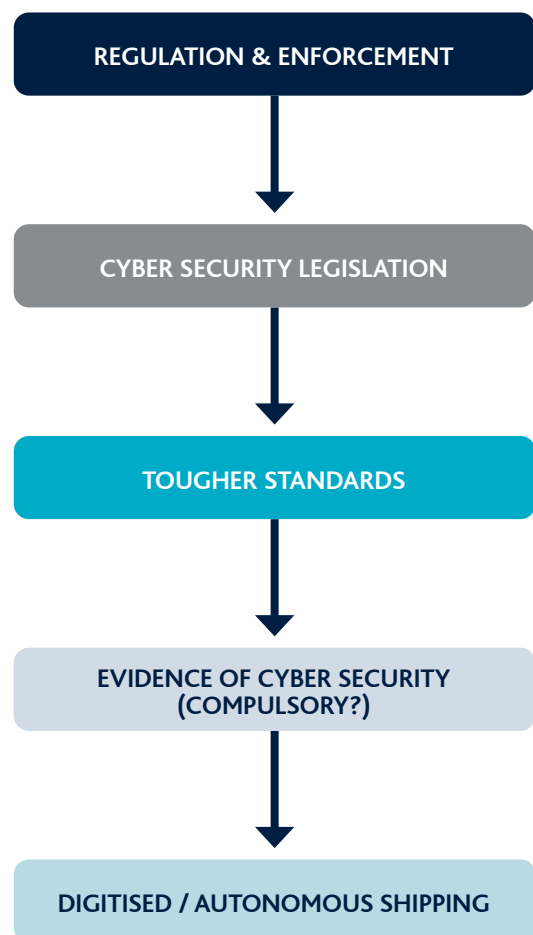


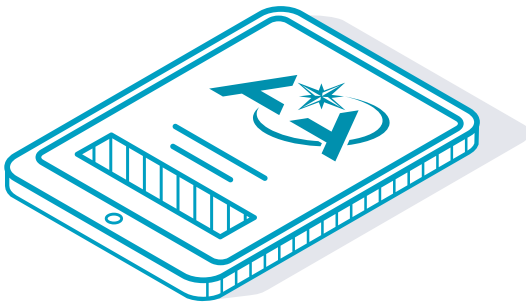
7 THE REGULATORY PICTURE = WHY YOU CANNOT IGNORE RESPONDING TO CYBER

The current situation



The Future: There will be more...



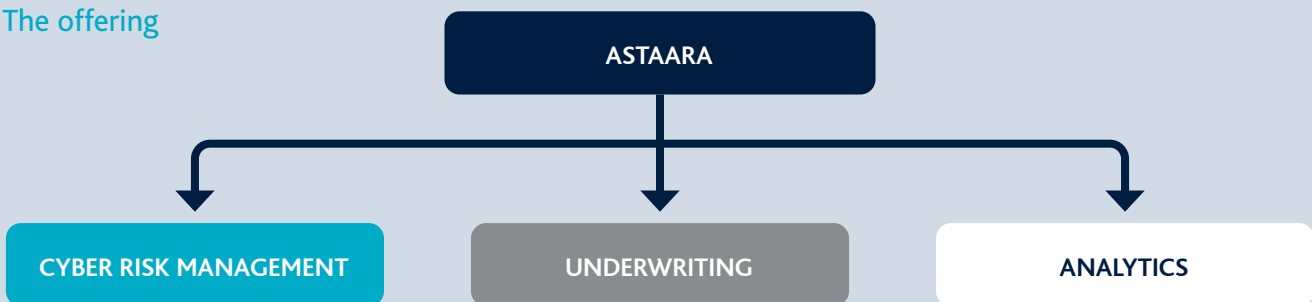


8 AN INTRODUCTION TO ASTAARA

The problem

- Cyber risk advisory response is not focused on marine
- No current comprehensive insurance response

The offering



AstaaraCyber makes your business stronger

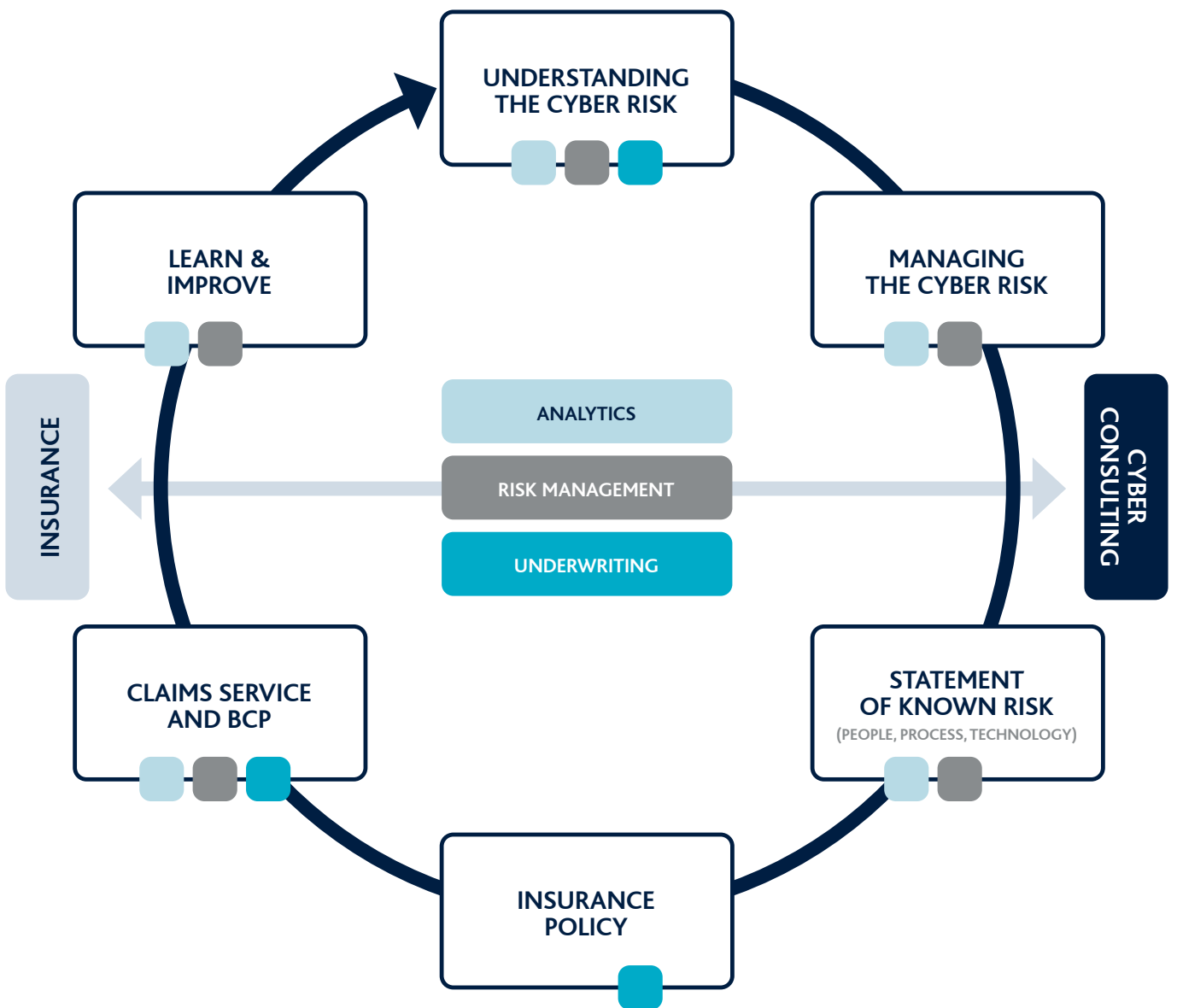


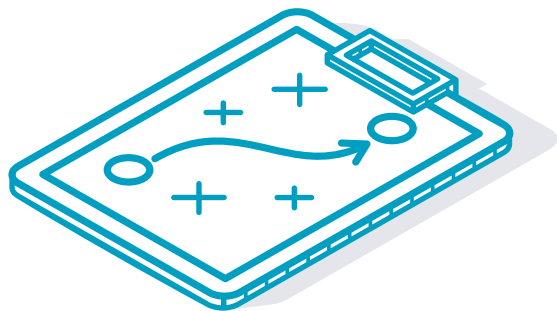
The solution



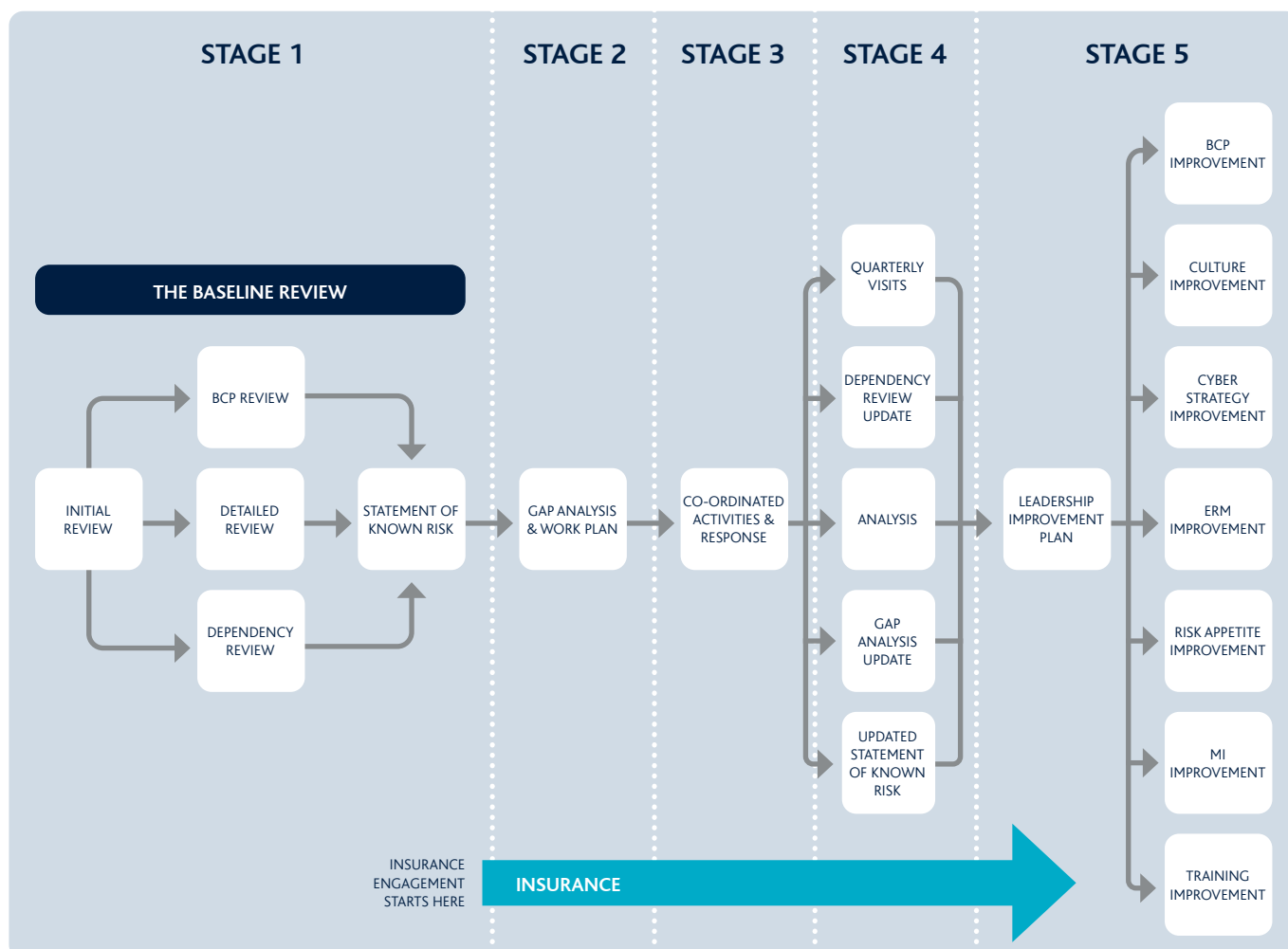


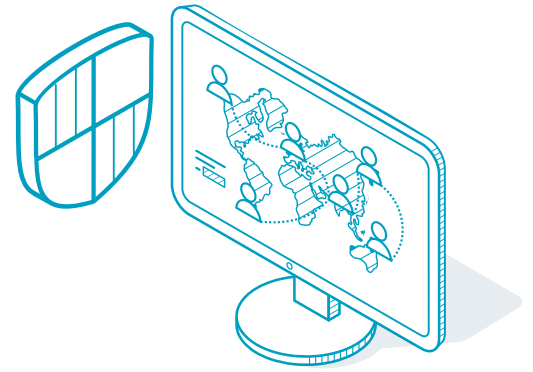
9 ASTAARA OFFERS MARITIME COMPANIES AN INTEGRATED APPROACH TO TACKLING THE CYBER THREAT



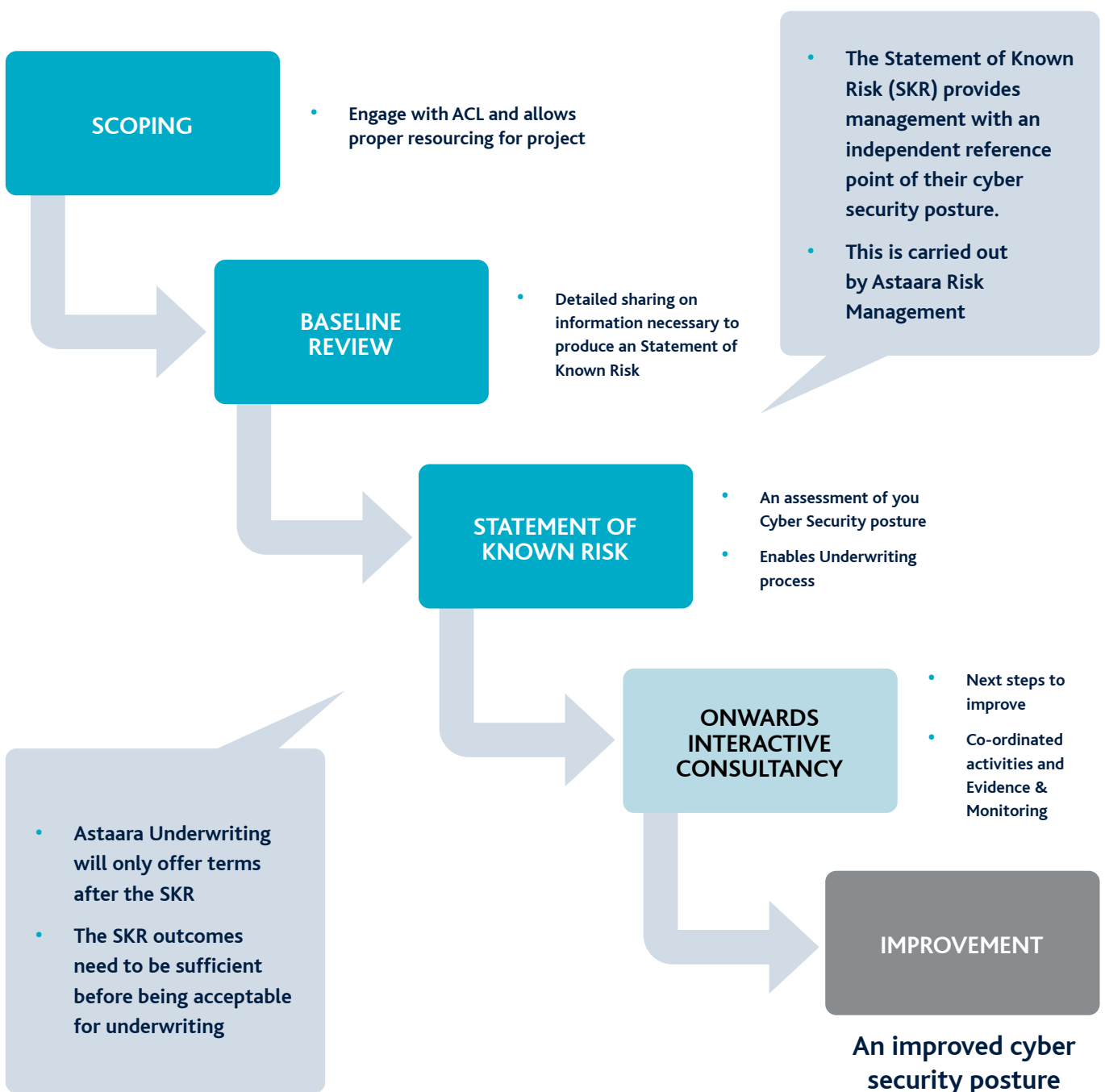


10 HOW DO WE DELIVER STRATEGIC OUTCOMES TO SHIOWNERS





11 NEXT STEPS... FROM UNDERSTANDING YOU AS A CLIENT TO IMPROVING YOUR CYBER SECURITY POSTURE





#ResilienceandRecovery



www.astaara.co.uk

robert.dorey@astaara.co.uk william.egerton@astaara.co.uk james.cooper@astaara.co.uk

