

[Home](#)[Circulars](#)

Notice issued by Shandong MSA with respect to the recommended route for fishing vessels in the densely navigated area in southeast of Shidao, China

Date : 2024-04-18

Circular No.: SPI240401

Date: 18 April, 2024

Dear Sirs / Madams,

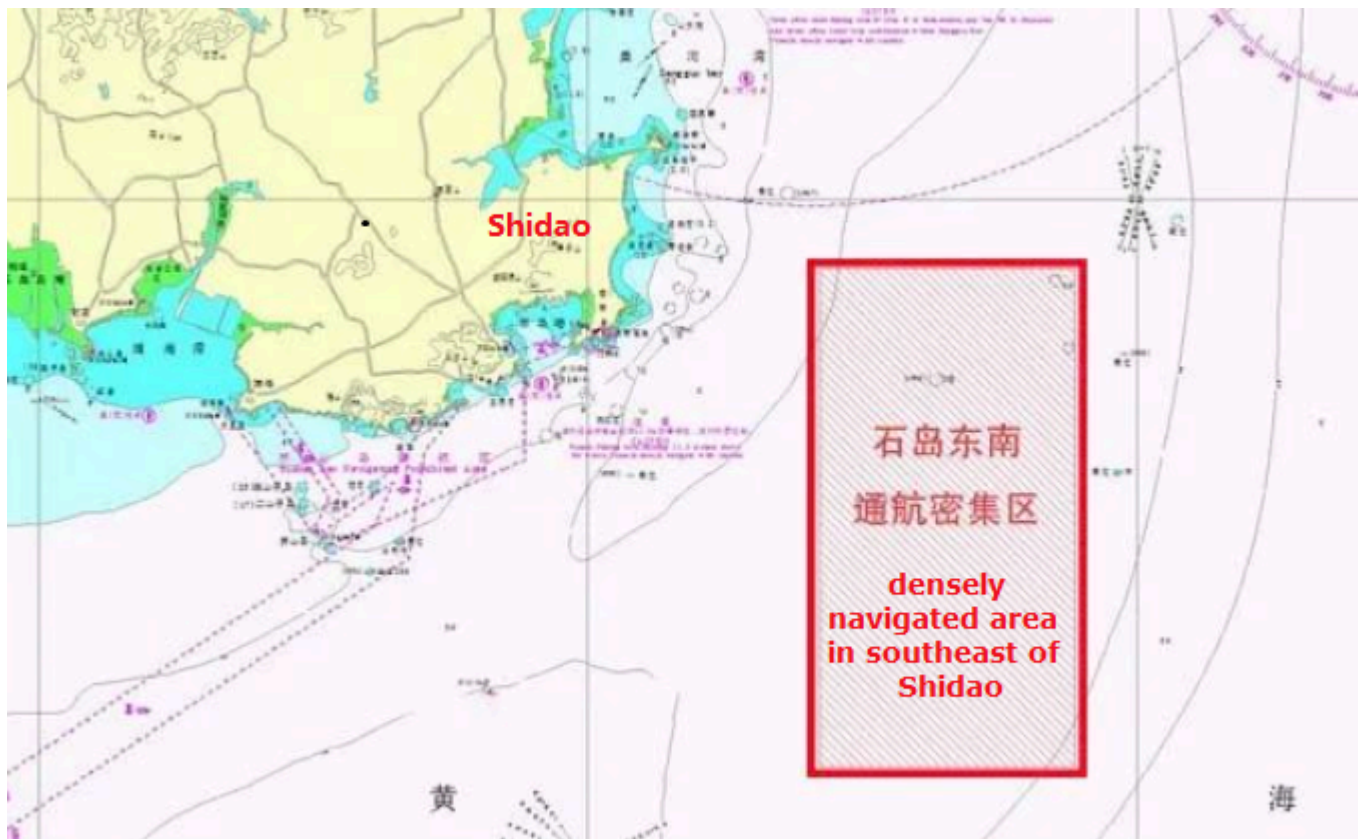
Please be kindly advised that, Shandong Maritime Safety Administration and Shandong Agriculture and Rural Administration has jointly promulgated the Notice on April 9, 2024 with respect to the recommended route for fishing vessels in the densely navigated area in southeast of Shidao, Weihai, Shandong Province along with the related navigation guidance for the vessels in the area.

We have summarized the key contents of this Notice as follows for your easy reference:

1. The densely navigated area in southeast of Shidao, Weihai

The densely navigated area in the southeast of Shidao, Weihai was announced in Notice of Weihai Maritime Safety Administration [2015] No. 017, delineated by the lines connecting the following four points: 36°57'00"N, 122°42'42"E; 36°57'00"N, 122°56'36"E; 36°35'00"N, 122°42'42"E; 36°35'00"N, 122°56'36"E. This area spans 11 nautical miles from east to west and

22 nautical miles from north to south.



The waterway in this area experiences heavy maritime traffic and complex navigational conditions, leading to frequent collisions between commercial and fishing vessels. Vessels navigating through this area are reminded to exercise special caution and take proactive measures to prevent accidents.

2. The recommended route for fishing vessels in the area

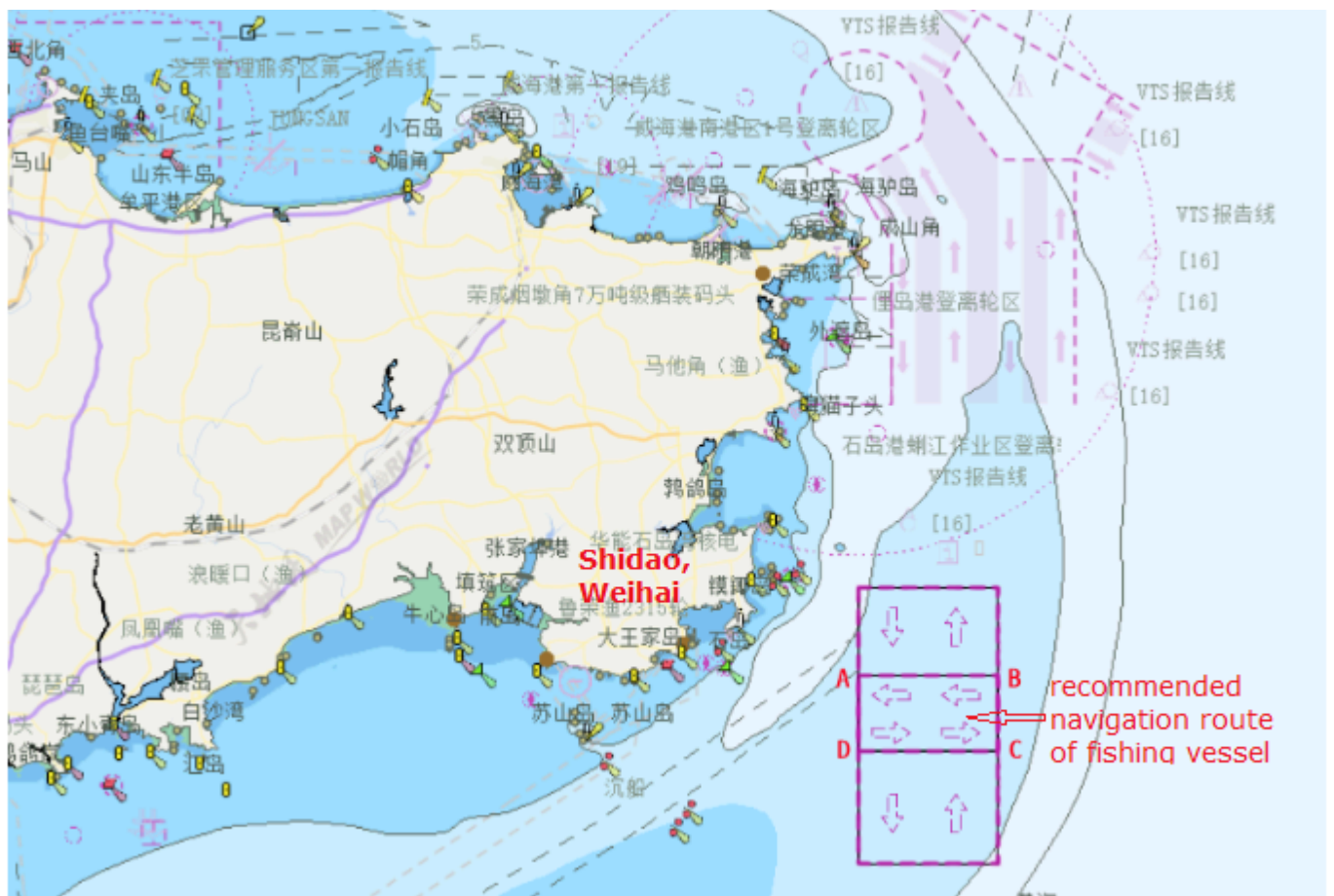
The recommended route for fishing vessels is the water area enclosed by the lines connecting points A, B, C, and D.

A: 36°50'00.00"N/122°42'42.00"E;

B: 36°50'00.00"N/122°56'36.00"E;

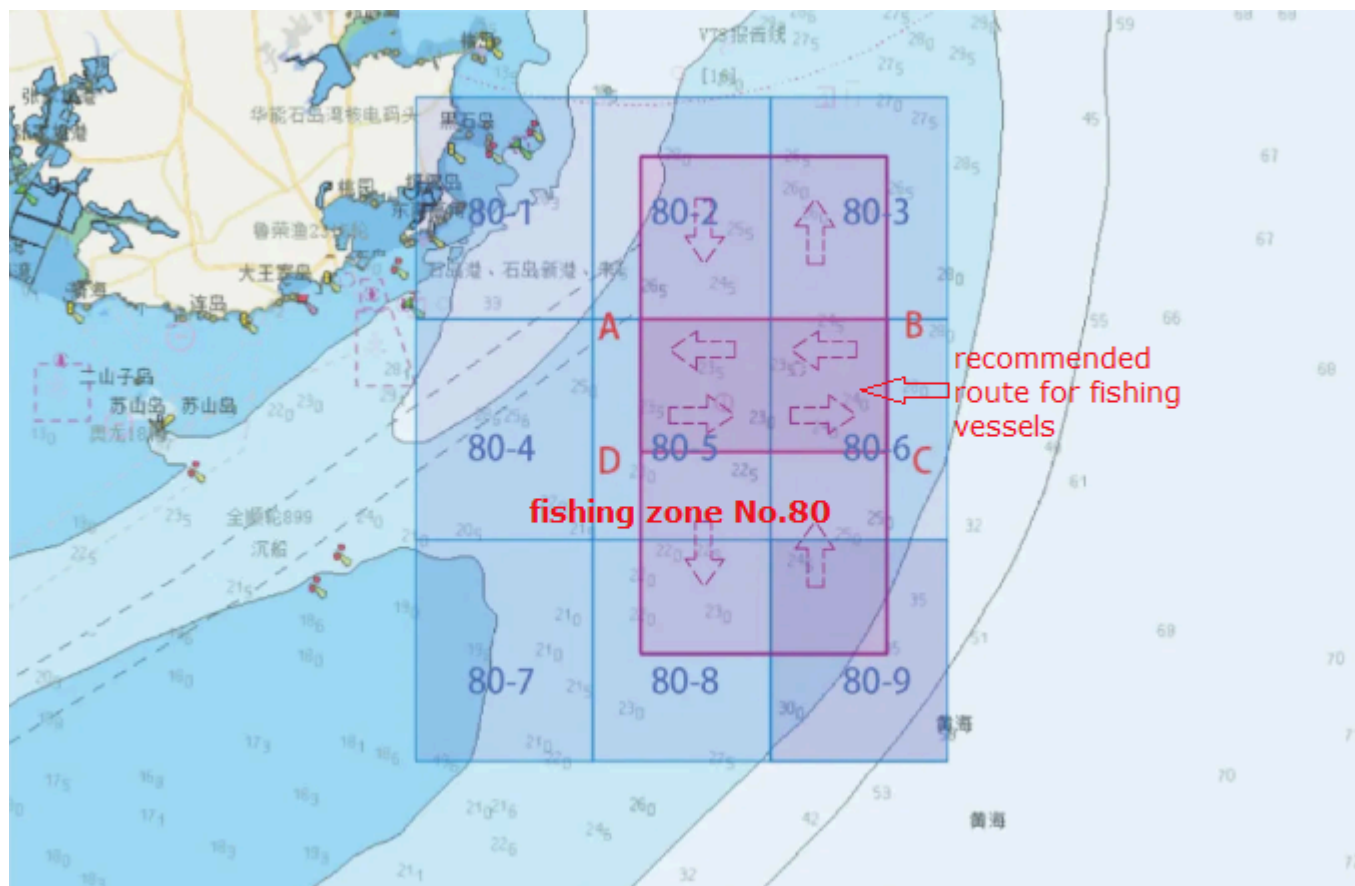
C: 36°44'00.00"N/122°56'36.00"E;

D: 36°44'00.00"N/122°42'42.00"E



This recommended route spans 11 nautical miles from east to west and 6 nautical miles from north to south. It is intended to guide fishing vessels through the densely navigated area in southeast of Shidao in an orderly manner, thereby regulating the navigation order of this area and preventing potential collisions between commercial and fishing vessels.

The boundary AB of the route is delineated by the fishing zone boundaries of 80-1, 80-2, 80-3, 80-4, 80-5, and 80-6, facilitating quick recognition by fishing vessels.



3. Navigation guidelines for fishing vessels in the recommended route

(1) Fishing vessels should enter or exit the recommended route at the smallest possible angle. Whenever safe and feasible, they should strive to navigate along the right side of the route in the direction of travel.

(2) When fishing vessels navigate north-south across the recommended route, they should observe the dynamics of other fishing vessels within the recommended route in advance and endeavor to avoid crossing during periods of heavy fishing vessel traffic.

(3) When fishing vessels navigate through the recommended route, it is essential to ensure clear communication via VHF Channel 16 and comply with traffic management regulations from the competent authorities to guarantee safety.

4. Navigation guidelines for commercial vessels in the area

(1) When navigating through densely navigated area, commercial vessels should observe the dynamics of fishing vessels in the area beforehand. If fishing vessels are concentrated in crossing the recommended route, commercial vessels should take proactive measures such as reducing speed, stopping, or detouring to ensure safety.

(2) When commercial vessels are navigating in the east-west direction, it is not advisable for them to use the recommended route for fishing vessels due to safety considerations

(3) When commercial vessels are navigating in the north-south direction, crossing the recommended route of fishing vessels is permitted, but the particular attention should be paid and following precautions measures should be taken:

1. The captain should take command on the bridge in advance, using hand steering, and if necessary, standing by engine.
2. Maintain a safe speed and cross the recommended route of fishing vessel as a right angle as possible.
3. Keep available on VHF channel 16, coordinate for maneuvering, and ensure clear passage when crossing.
4. Exercise caution when overtaking during the crossing of the recommended route for fishing vessels.

For the sake of completeness, we also attach herein the free-translation of the Notice issued by Shandong MSA and Shandong Agriculture and Rural Administration for your easy reference.

We hope the above will be of some assistance. If you have any further queries, please feel free to contact with us.

Yours faithfully,



General Manager
Shanghai P&I Services Ltd.

Rm301, China P&I Centre, Building 7, No.18 Gongping Road,

Hongkou District, Shanghai 200082, China

24 hour Duty phone: +86 139 1610 7273

Email: pandi@shpni.com.cn (mailto:pandi@shpni.com.cn) | Web: www.shpni.com.cn

(<http://www.shpni.com.cn>)

Shanghai | Guangzhou | Xiamen | Qingdao | Tianjin | Dalian | P&I Correspondents in China

[Attachment - Free Translation of the MSA Notice.pdf](#)

<http://8.142.116.91:8000/images/lbshserver/1/1713521056824.pdf>

SHANGHAI P&I SERVICES LTD

Rm301, China P&I Centre, Building 7, No.18

Gongping Road, Hongkou District, Shanghai 200082,

P. R. China

Tel:+86 21 35395800

Email: pandi@shpni.com.cn

Emergency call: +86 139 1610 7273

力保海事服务(上海)有限公司 ※ 版权所有 2021
沪ICP备20005450号-3 (<https://beian.miit.gov.cn/>)