

News Article

Dominican Republic – National Park Environmental Fines

Santa Domingo correspondents Schad Expertise, Frederic Schad Inc. have advised the Club of a number of cases where vessels have been heavily fined for navigating, anchoring or grounding in national park waters off the Dominican Republic.

Under [Dominican law](#) a number of national parks, nature reserves, wildlife refuges, marine mammal sanctuaries, areas of scientific interest and habit/species management areas have been afforded special protection. According to reports, these areas are not marked on navigation charts and no Notices to Mariners have been published warning of the restrictions in place. A number of vessels have been fined substantial sums of money after entering, anchoring or grounding within these areas. Under Dominican Law ignorance of the protected areas and the applicable law is

not a defence. However, in exceptional cases it may be considered to be an extenuating circumstance.

The national parks vary in size from a few square kilometres to over fifty thousand square kilometres. Although the Cartographic Division of the Dominican Navy has been asked to provide the relevant hydrographic agencies with detailed information so that the parks may be marked on navigation charts, this may take some time.

Article 37 of the legislation lists 86 national parks with many covering sea areas. However, most of the fines appear to have involved vessels navigating or anchoring in the “Marine Mammal Sanctuary of the Silver and Navidad Banks” and the “La Caleta Submarine Park”. The approximate locations of these parks are shown on the

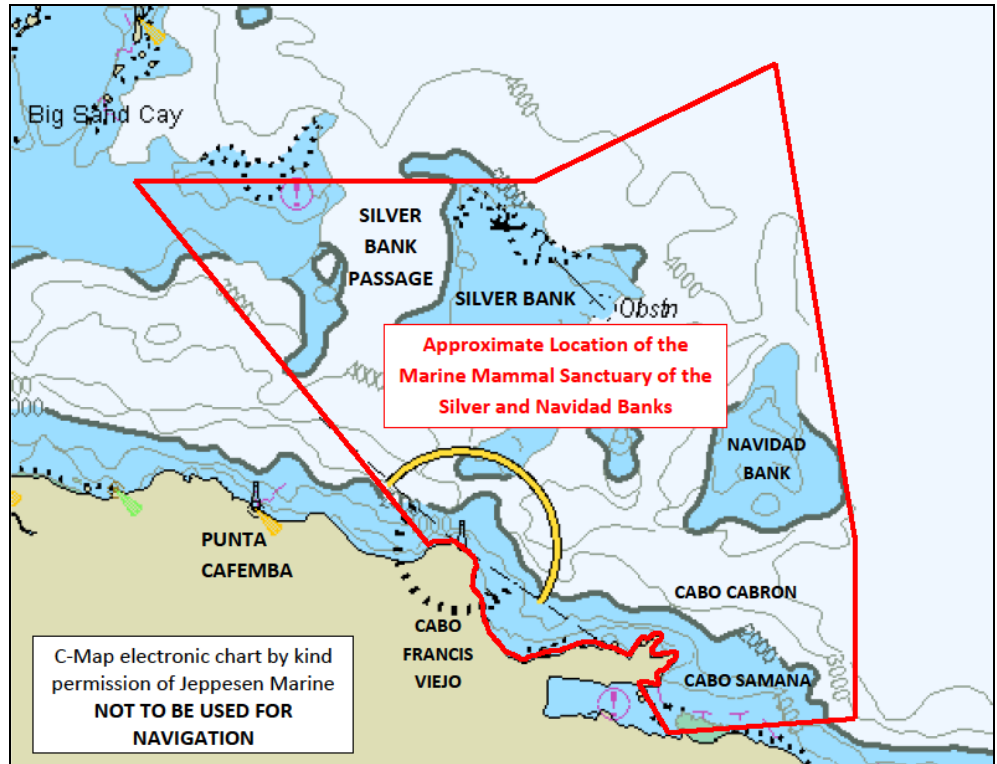
following page.

In addition, the latitude and longitude of the points delineating the boundaries of marine national parks that exceed 100 square kilometres are listed in the [attached table](#). The positions have been converted from the Universal Transverse Mercator (UTM) co-ordinates specified in the legislation and should be regarded as indicative only. Moreover, the legislation appears to include a number of erroneous co-ordinates. These are marked in blue. For precise details on the limits of a particular park, reference should be made to the relevant subparagraph of Article 37.

Members are advised to ensure that their deck officers take account of the protected national parks when planning passages to, from or past the Dominican Republic.

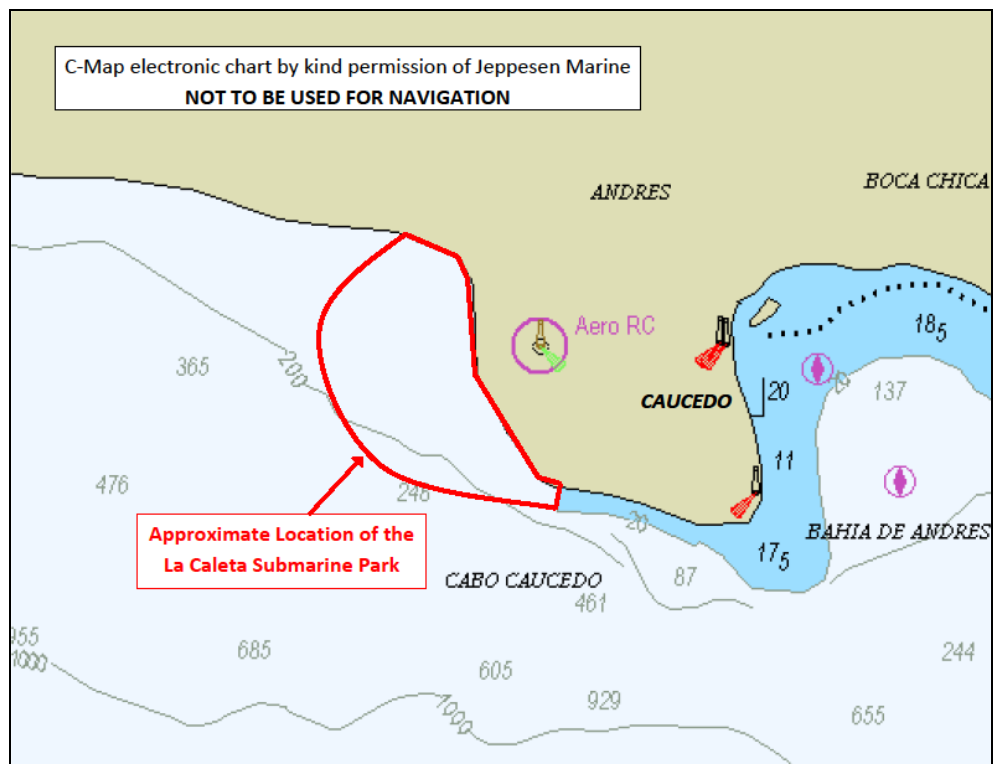
Marine Mammal Sanctuary of the Silver and Navidad Banks

Located off the north coast of the Dominican Republic and extending out toward the Turks and Caicos Islands and The Bahamas.



La Caleta Submarine park

Located on the south coast about 20km east of the city of Santa Domingo, close to the Dominican ports of Caucedo and Boca Chica and next to the International Airport. The submarine park is situated in a sheltered bay where vessels may mistakenly anchor in the event of berth congestion as no anchoring is permitted outside Caucedo port.



Limits of the Marine Parks around the Dominican Republic exceeding 100 Square Kilometres

WP	Latitude	Longitude
(7) Marine Mammal Sanctuary of the Silver Bank and Navidad Bank		
1	19° 11.5' N	069° 18.9' W
2	19° 00.5' N	069° 11.9' W
3	19° 02.0' N	068° 31.5' W
4	19° 41.7' N	068° 31.0' W
5	21° 17.6' N	068° 45.9' W
6	20° 54.7' N	069° 39.7' W
7	20° 54.8' N	070° 01.7' W
8	20° 55.0' N	071° 07.2' W
9	19° 40.7' N	070° 02.5' W
(15) Sierra Martin Garcia		
1	18° 21.1' N	071° 00.2' W
2	18° 16.8' N	070° 59.9' W
3	18° 16.9' N	070° 52.7' W
4	18° 26.0' N	071° 06.4' W
5	18° 25.4' N	071° 07.3' W
6	18° 22.0' N	071° 08.9' W
7	18° 20.7' N	071° 08.5' W
8	18° 16.6' N	071° 03.3' W
9	18° 19.0' N	071° 02.7' W
10	18° 22.7' N	071° 00.2' W
(21) Parque Nacional del Este		
1	17° 26.9' N	068° 49.4' W
2	18° 22.1' N	068° 49.2' W
3	18° 22.1' N	068° 49.8' W
4	18° 23.2' N	068° 49.8' W
5	18° 23.2' N	068° 47.5' W
6	18° 22.1' N	068° 47.5' W
7	18° 22.6' N	068° 36.8' W
8	18° 22.3' N	068° 36.7' W
9	18° 20.5' N	068° 35.1' W
10	18° 12.3' N	068° 47.8' W
11	18° 12.3' N	068° 45.2' W
12	18° 14.1' N	068° 45.2' W
13	18° 13.9' N	068° 44.7' W
14	17° 26.9' N	068° 49.4' W
(26) Submarino Monte Cristi		
1	19° 53.4' N	071° 45.3' W
2	19° 54.3' N	071° 30.0' W
3	19° 52.5' N	071° 25.8' W
4	19° 51.7' N	071° 23.1' W
5	19° 50.7' N	071° 13.2' W
6	19° 52.1' N	071° 13.5' W
7	19° 55.9' N	071° 30.0' W
8	19° 55.3' N	071° 40.9' W
9	19° 54.7' N	071° 41.0' W
10	19° 52.6' N	071° 41.0' W
11	19° 51.5' N	071° 40.4' W
12	19° 51.5' N	071° 39.7' W
13	19° 53.1' N	071° 39.6' W
14	19° 53.5' N	071° 39.6' W

WP	Latitude	Longitude
(27) La Caleta Subaqua Park		
1	18° 24.2' N	069° 40.0' W
2	18° 24.5' N	069° 39.9' W
3	18° 27.0' N	069° 41.0' W
4	18° 27.1' N	069° 41.4' W
5	18° 27.1' N	069° 41.4' W
6	18° 26.2' N	071° 36.0' W
7	18° 26.4' N	069° 42.4' W
8	18° 23.7' N	070° 55.9' W
(22) Parque Nacional Jaragua		
1	17° 51.0' N	071° 17.2' W
2	17° 50.9' N	071° 18.6' W
3	17° 48.1' N	071° 21.2' W
4	17° 46.5' N	071° 22.8' W
5	17° 46.0' N	071° 26.6' W
6	17° 49.5' N	071° 28.4' W
7	17° 53.3' N	071° 31.5' W
8	17° 54.9' N	071° 30.1' W
9	17° 57.3' N	071° 29.7' W
10	17° 55.8' N	071° 30.0' W
11	17° 59.4' N	071° 35.1' W
12	18° 00.0' N	071° 34.8' W
13	17° 59.9' N	071° 35.0' W
14	18° 01.9' N	071° 35.4' W
15	18° 02.2' N	071° 37.7' W
16	18° 04.2' N	071° 38.3' W
17	18° 04.4' N	071° 39.2' W
18	18° 05.0' N	071° 40.2' W
19	18° 05.8' N	071° 41.0' W
20	18° 04.5' N	071° 42.1' W
21	18° 01.1' N	071° 42.0' W
22	17° 57.9' N	071° 38.2' W
23	17° 56.1' N	071° 37.2' W
24	17° 53.4' N	071° 37.1' W
25	17° 52.7' N	071° 37.9' W
26	17° 47.5' N	071° 39.5' W
27	17° 47.5' N	071° 43.5' W
28	17° 46.3' N	071° 44.1' W
29	17° 27.9' N	071° 39.0' W
30	17° 34.6' N	071° 23.0' W
31	17° 41.2' N	071° 19.2' W
32	17° 48.3' N	071° 16.4' W
33	17° 49.9' N	071° 15.3' W
34	17° 51.0' N	071° 17.2' W
(51) Cayos Siete Hermanos		
1	19° 54.5' N	071° 52.5' W
2	19° 54.6' N	071° 45.6' W
3	19° 49.8' N	071° 45.6' W
4	19° 49.9' N	071° 52.4' W
5	19° 54.5' N	071° 52.5' W